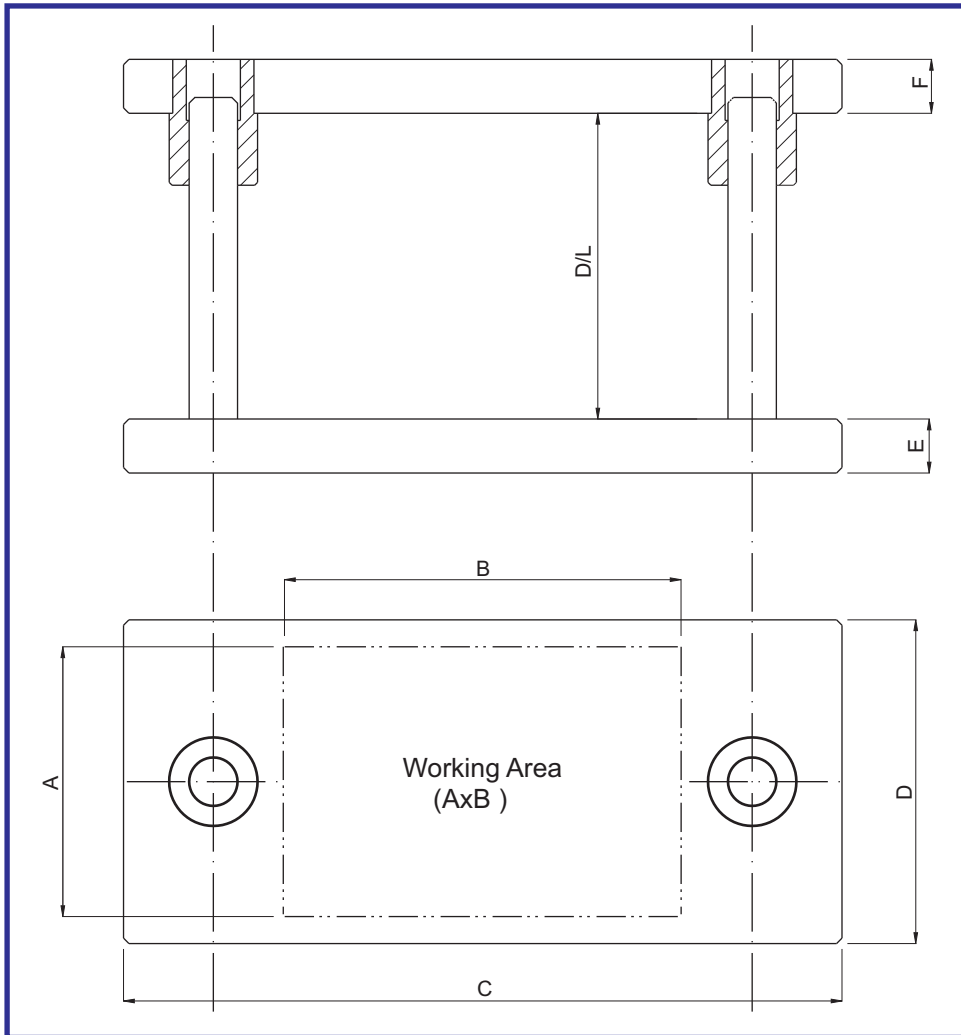


## ► Centre Pillar Die Set (PMSC / PMSCB)



### Die Set Plain

**Material :**  
 Plate :- MS  
 Pillar :- En353  
 Bush :- En353

**Hardness :**  
 Pillar :- 55 - 58 HRC  
 Bush :- 55 - 58 HRC

### Die Set With Ball Cage

**Material :**  
 Plate :- MS  
 Pillar :- En353  
 Bush :- En353  
 BallCage :- Brass / Aluminium

**Hardness :**  
 Pillar :- 58 - 60 HRC  
 Bush :- 58 - 60 HRC



### CENTRE PILLAR DIE SET PLAIN

Order Type :- Code - D/L

Example :- PMSC100 X 100 -125

Code	A	B	C	D	E	F	CD	PILLAR SIZES
PMSC 100X100	100	100	225	110	32	32	164.0	24/25
PMSC 125X125	125	125	255	135	32	32	194.0	24/25
PMSC 150X150	150	150	290	160	32	32	222.5	28/29
PMSC 175X175	175	175	315	185	32	32	247.5	28/29
PMSC 200X200	200	200	350	210	40	40	277.5	34/35
PMSC 250X250	250	250	400	260	40	40	327.5	34/35
PMSC 300X300	300	300	450	310	40	40	372.5	40/42

### CENTRE PILLAR DIE SET WITH BALL CAGE

Code	A	B	C	D	E	F	CD	PILLAR SIZES
PMSCB 100X100	100	100	240	110	32	32	172	24/25
PMSCB 125X125	125	125	270	135	32	32	202	24/25
PMSCB 150X150	150	150	305	160	32	32	232	28/29
PMSCB 175X175	175	175	330	185	32	32	257	28/29
PMSCB 200X200	200	200	365	210	40	40	287	34/35
PMSCB 250X250	250	250	415	260	40	40	337	34/35

**Note :** Our standard day light is 100mm. Day light to any other specification can be provided.  
 Die Set as per Customer Drawing can also be manufactured.